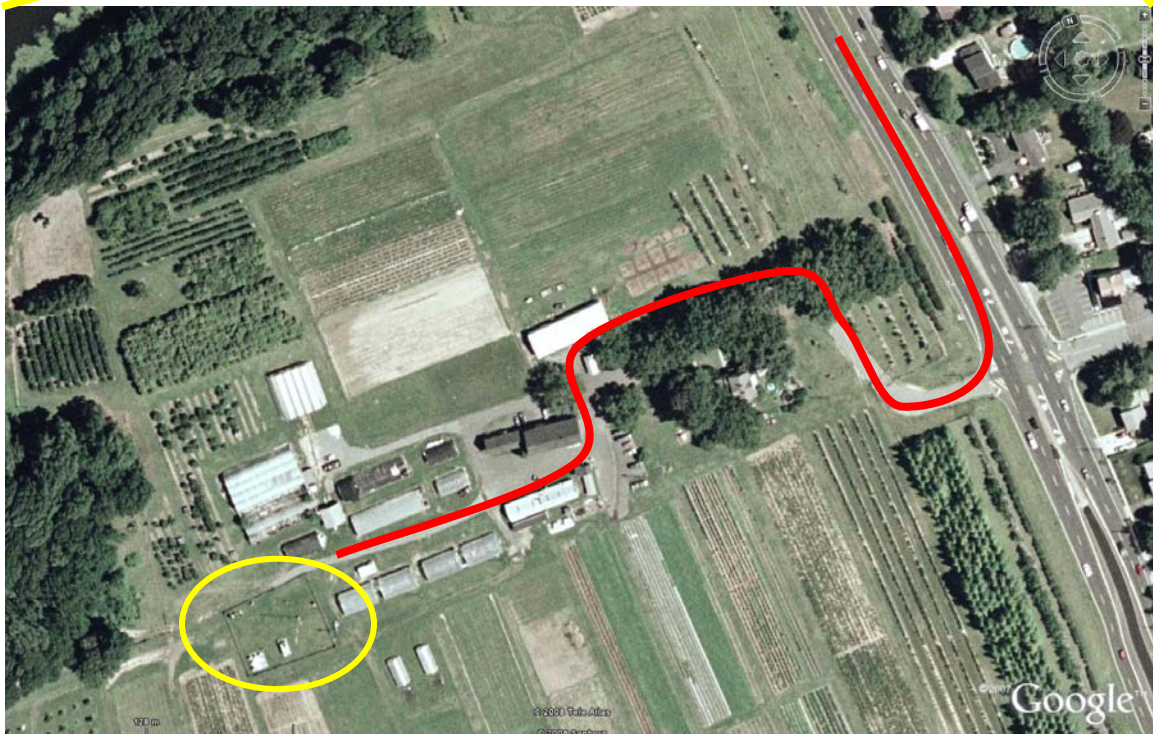
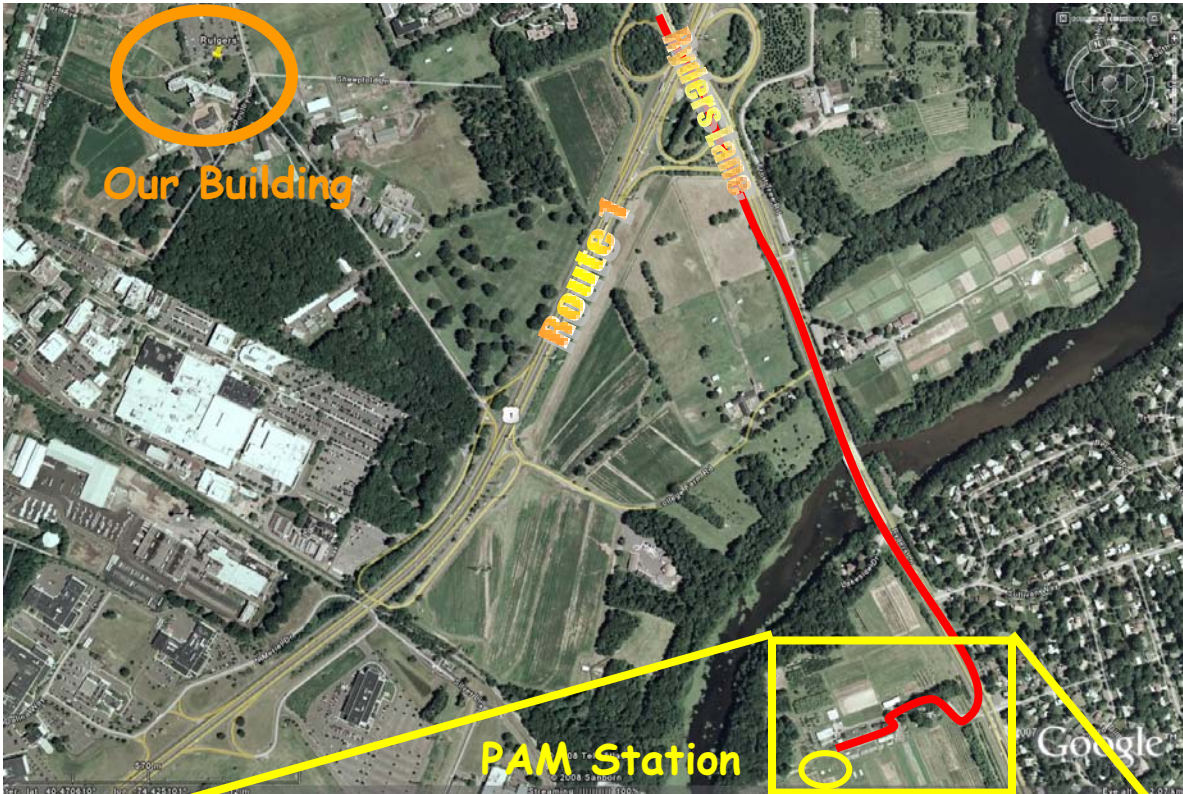


Class on Oct. 11 will be a trip to our two weather observatories.

1. We will meet first at PAM (Photochemical Air Monitoring) station promptly at 3:55 p.m. Take Ryders Lane south. Drive 0.85 miles past Route 1 and turn right at the top of the hill where the sign says “Vegetable Research Farm Number 3.” Go through the farm until you get to the PAM station, another 0.25 miles. See maps below.



2. Drive to the Rutgers Gardens weather station. Exit the PAM Station and turn right on Ryders Lane. Make the first left on Corona Road, then left on Allwood Road, left on Salt Meadow Road, and right on Ryders Lane. Drive 0.6 miles and take the Rutgers Gardens exit from Ryders Lane. Turn left at “Hort Farm 1” sign and follow road to fork. Take a right and park in parking lot on the right. Walk up the road to the weather station. See map below and also link to directions at <http://maps.rutgers.edu/maps/default.aspx?preadj=true&campus=7?1274,1184>

