

Climate Change 2013: The Physical Science Basis

Working Group I contribution to the IPCC Fifth Assessment Report

Summary for Policymakers

Qin Dahe

Thomas Stocker

259 Authors from 39 Countries

© Yann Arthus-Bertrand / Altitude

Key SPM Messages

19 Headlines

on less than 2 Pages

Summary for Policymakers
~14,000 Words

14 Chapters
Atlas of Regional Projections

54,677 Review Comments
by 1089 Experts

2010: 259 Authors Selected

2009: WGI Outline Approved

ipcc

INTERGOVERNMENTAL PANEL ON climate change

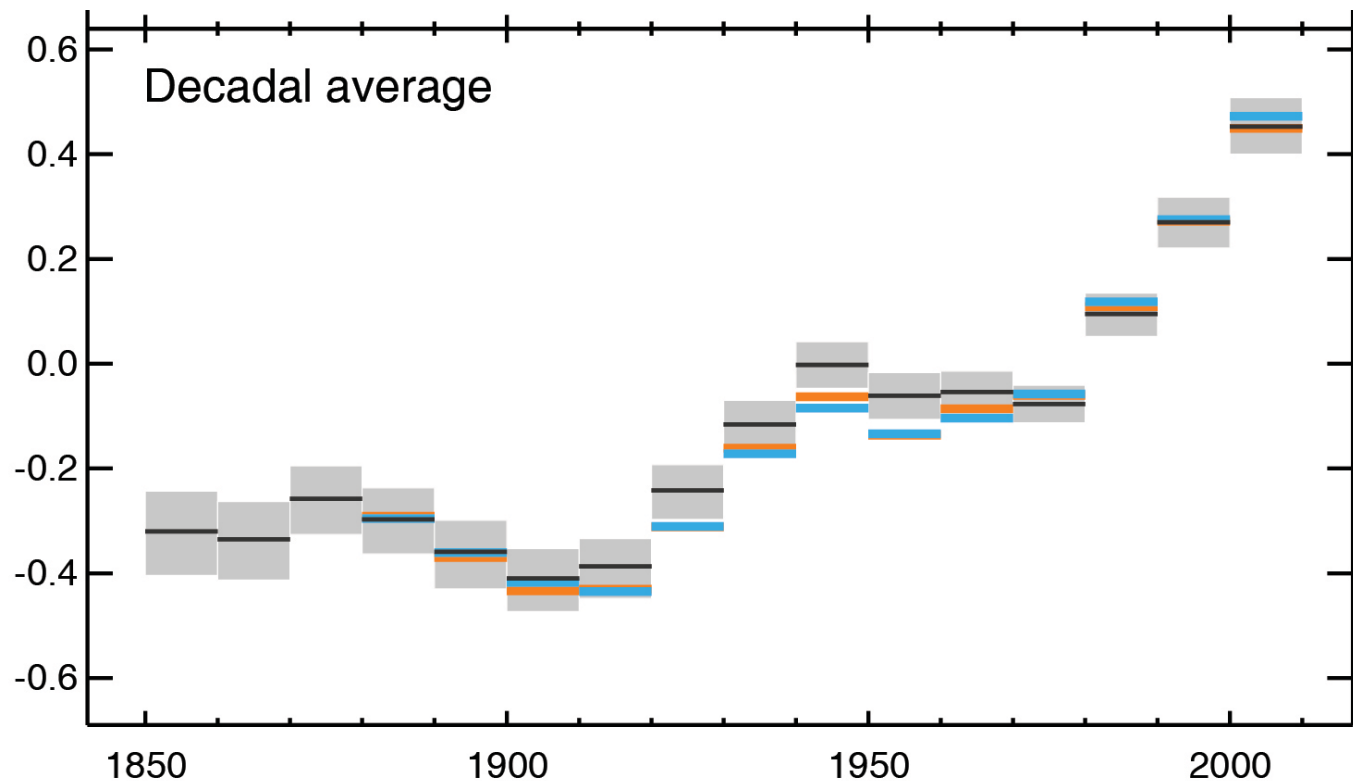
CLIMATE CHANGE 2013

The Physical Science Basis

WG I

WORKING GROUP I CONTRIBUTION TO THE
FIFTH ASSESSMENT REPORT OF THE
INTERGOVERNMENTAL PANEL ON CLIMATE CHANGE

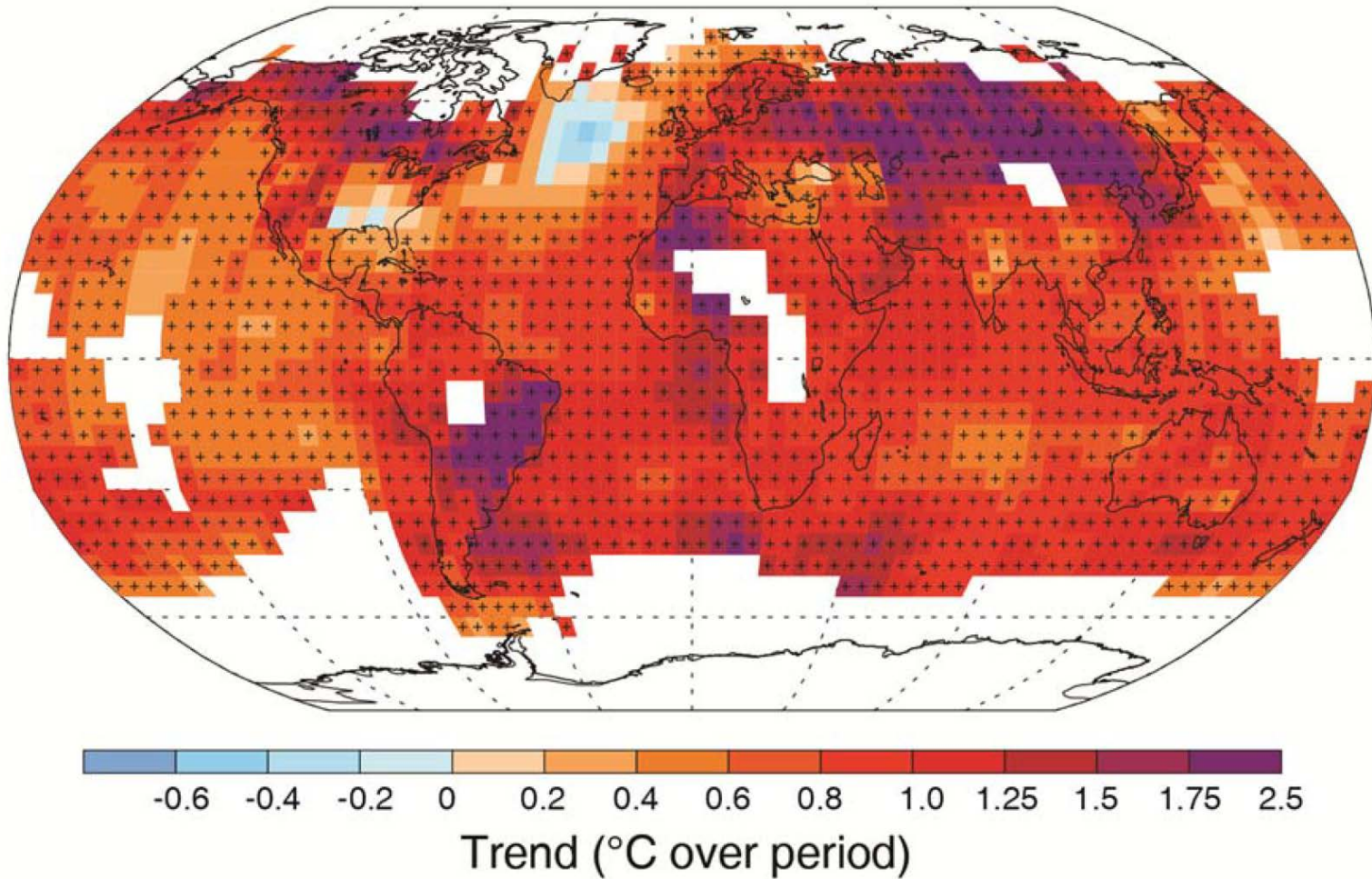




(IPCC 2013, Fig. SPM.1a)

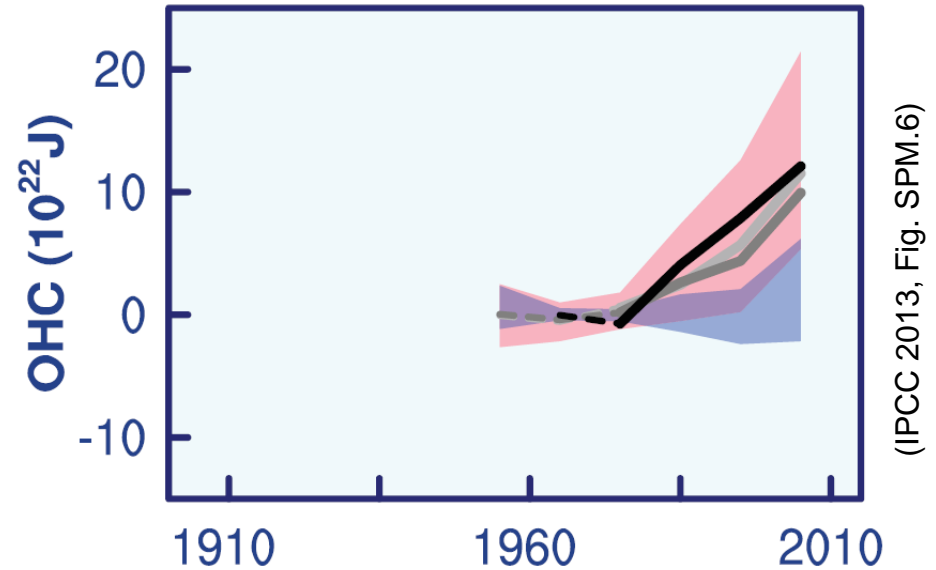
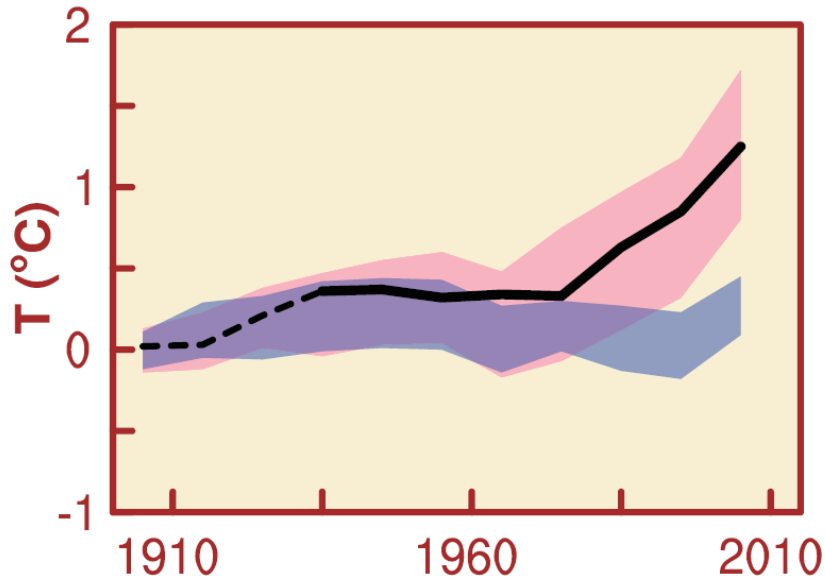
Each of the last three decades has been successively warmer at the Earth's surface than any preceding decade since 1850.

In the Northern Hemisphere, 1983–2012 was *likely* the warmest 30-year period of the last 1400 years (*medium confidence*).



(IPCC 2013, Fig. SPM.1b)

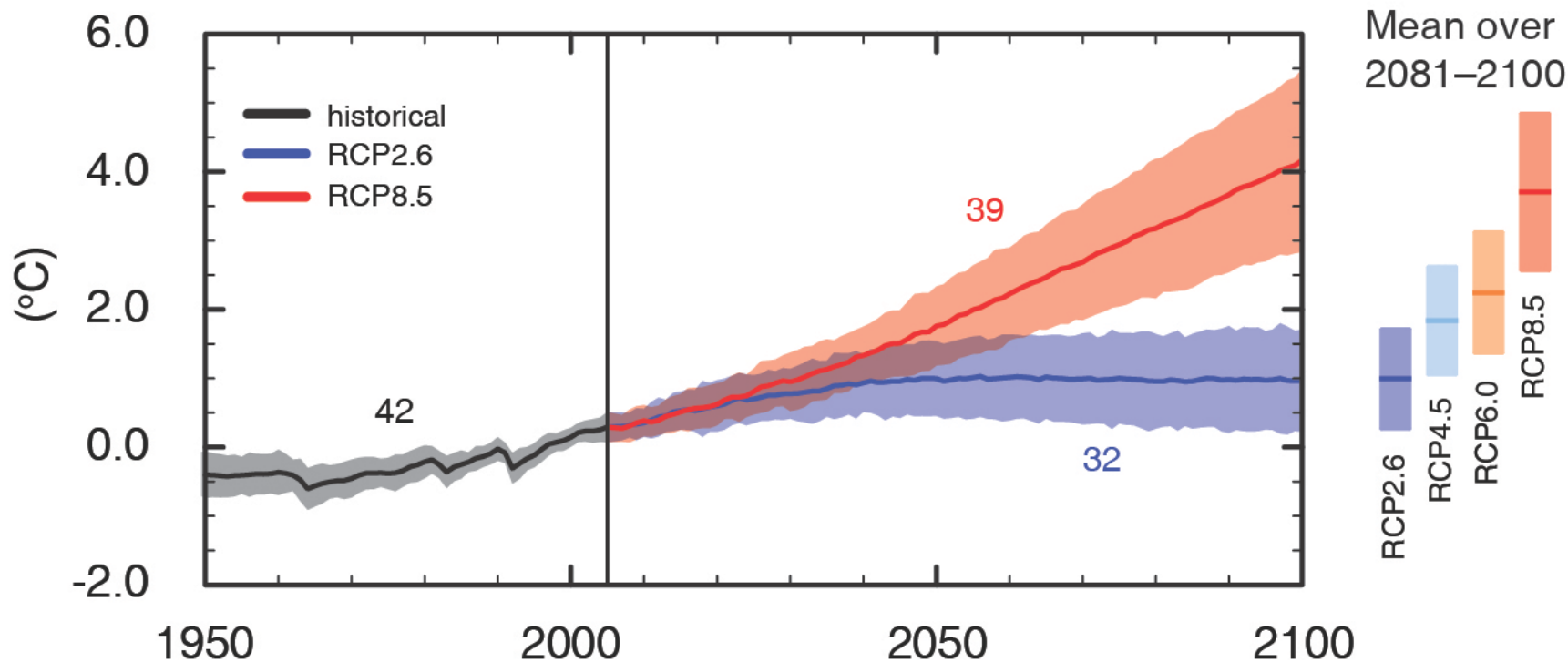
Warming in the climate system is unequivocal



(IPCC 2013, Fig. SPM.6)

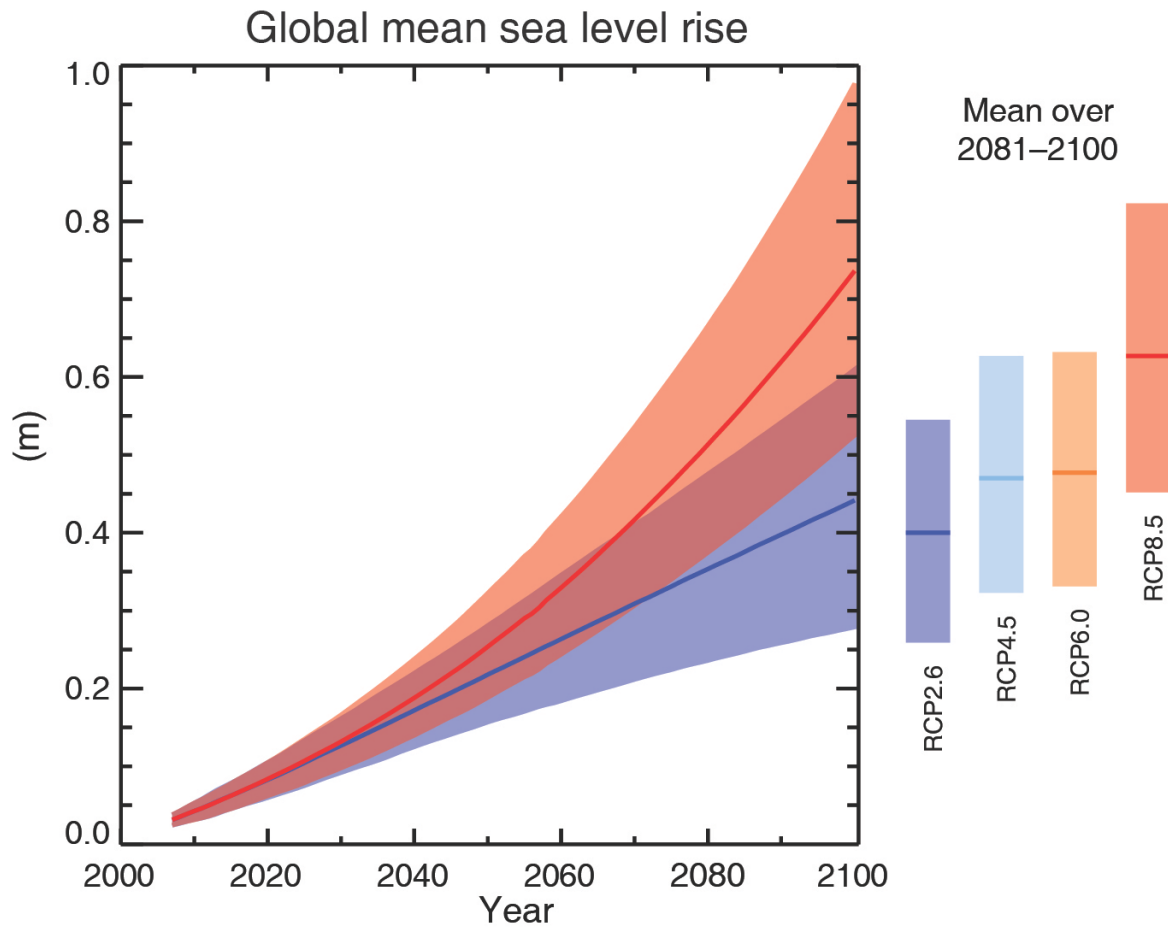
Human influence on the climate system is clear

Global average surface temperature change



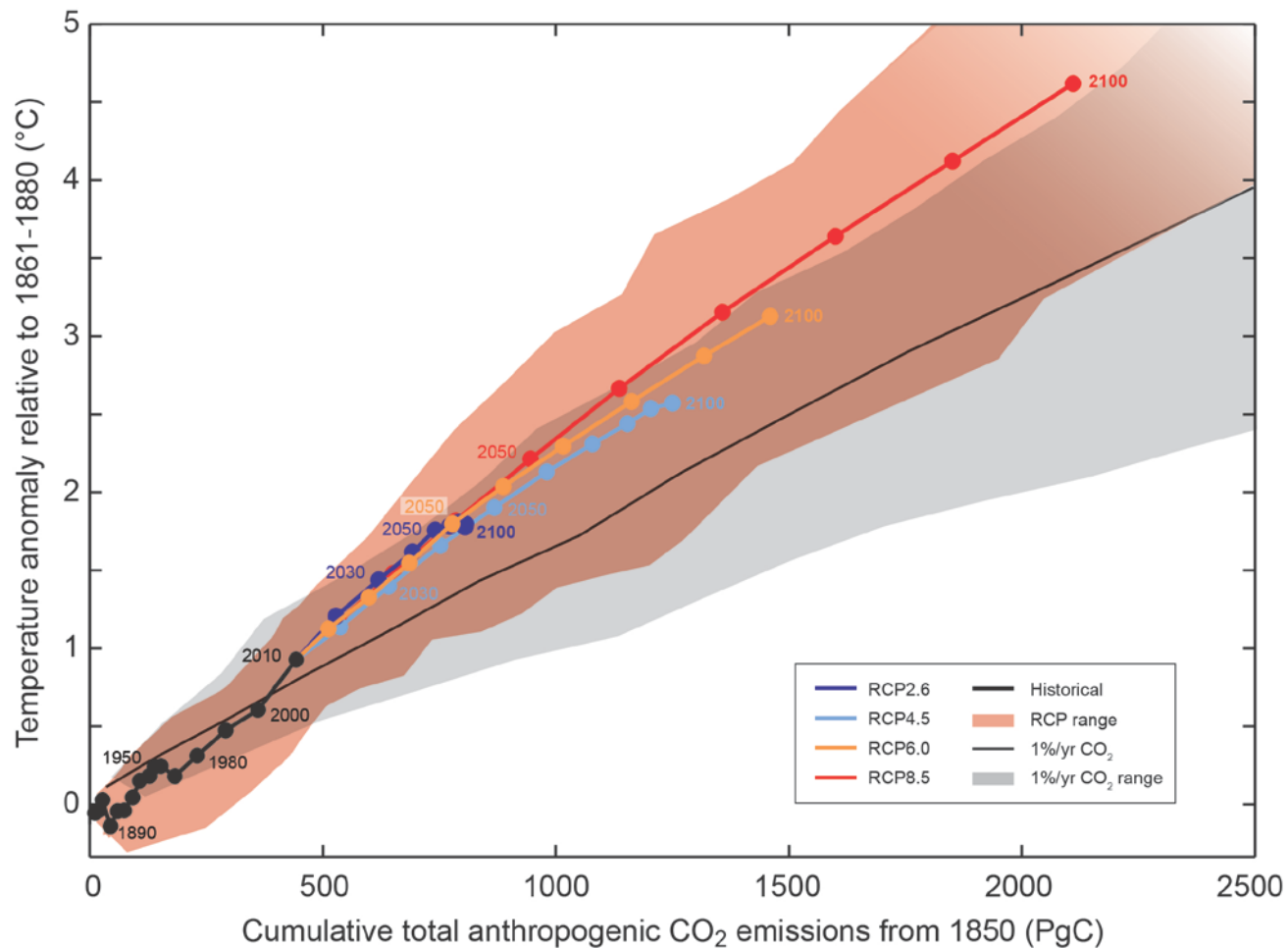
(IPCC 2013, Fig. SPM.7a)

Global surface temperature change for the end of the 21st century is *likely* to exceed 1.5°C relative to 1850 for all scenarios



(IPCC 2013, Fig. SPM.9)

Global mean sea level will continue to rise during the 21st century



(IPCC 2013, Fig. SPM.10)

Limiting climate change will require substantial and sustained reductions of greenhouse gas emissions

Climate Change 2013: The Physical Science Basis

Working Group I contribution to the IPCC Fifth Assessment Report

Further Information

www.climatechange2013.org

© Yann Arthus-Bertrand / Altitude